



Building Connections – Building Community

**A Neighborhood Partnership
Supporting Families**

BC2 is a project of the Tarrant County Youth Collaboration

Building Connections – Building Community

The History

- **1999:** 50 Community Stakeholder organizations meet to address rising rates of child neglect and abuse in Tarrant County, Texas
- **2001:** Neglect Hurts report issued
- **2003-2005:** NETCARE Version 1.0: case management model
 - **Lessons Learned:**
 - More difficult referrals than expected
 - Unable to locate many families
 - Family engagement was difficult
 - Fragmented community resources
 - **Changes to Make:**
 - Address children's needs, offer services for older youth
 - Do not rely solely on CPS referrals
 - Invest in intensive, strategic outreach to new referrals
 - Provide group experiences (support and/or therapy)

Building Connections – Building Community

Social Isolation

- **Familial loneliness contributes to child abuse and neglect** because such isolation stems from psychological and behavior barriers that prevent parents from developing positive connections with others (Seagull, 1987).
- In a March 2004 paper titled Building Community Capacity for Violence Prevention, (William J. Sabol, Claudia J. Coulton, and Jill E. Korbin; *Journal of Interpersonal Violence* 2004 19: 322-340), the authors note that **child abusing families are socially isolated from formal and informal support systems** (Belsky, 1993; Cox, 1997; Finkelhor, 1995).
- Garbarino and Stocking (1980) suggest that **the most effective way to combat familial isolation is by strengthening the social cohesiveness of troubled communities.**
- **One way to strengthen the social cohesiveness of communities may be to engage at-risk families to become involved in their communities.** By becoming involved in the community, the at-risk family develops a web of formal and informal social support that helps parents cope with the stresses of child rearing and daily lives (Horton, 2003).

Building Connections – Building Community

Social Isolation

- **Child maltreatment: testing the social isolation hypothesis.** *For example, neglectful mothers had fewer network members, fewer contacts, fewer members living within 1 hour, and received fewer emotional and instrumental resources.*
http://www.ncbi.nlm.nih.gov/entrez/query.fcgi?cmd=Retrieve&db=PubMed&list_uids=8734555&dopt=Abstract
- **Compassion vs control. Conceptual and practical pitfalls in the broadened definition of child abuse.** *A broadened understanding of child abuse has enabled practitioners to think of the parents of abused children not as evil murderers but as human beings caught in a complex web of social isolation and deprivation.*
<http://jama.ama-assn.org/cgi/content/abstract/237/19/2086?maxtoshow=&HITS=10&hits=10&RESULTFORMAT=&fulltext=social+isolation&searchid=1&FIRSTINDEX=0&resourcetype=HWCIT>
- **To Avoid Social Isolation, Program Links Single Parents With Faith-Based "Family Friend".** *Washington State University School of Public Health planned and implemented an intervention to link families in faith-based congregations in Spokane, Wash., to isolated single-parent families in their communities.*
<http://www.rwjf.org/portfolios/resources/grantsreport.jsp?filename=045355.htm&iaid=144>
- **Social isolation and domestic violence among female drug users.** *Domestic violence, and in turn, substance abuse, have been associated also with profound social consequences such as social isolation (10-17). Without access to adequate social ties or relationships, socially isolated individuals are not integrated into a social support system.*
http://www.findarticles.com/p/articles/mi_m0978/is_2_28/ai_105370665

Building Connections – Building Community

Version 2.0

- Families at-risk of neglecting and/or abusing their children:
 - single-parent families
 - parents with infants and toddlers
 - families with persistent alcohol and/or drug abuse
 - grandparents as parents
- To Build Resiliency, promote:
 - social support and community connections
 - spirituality and cultural roots
 - supportive caregiver-child relationships
- Funding from US Department of Justice

Building Connections – Building Community

The Model

Prevention:

July 2005-June 2006

Building Social Capital Infrastructure

- Create partnerships between Faith Community, School District, City
- Determine geographic target zones
- Overlay Touchpoints & Fatherhood groups
- Expand support group capacity
- Create other de-isolation efforts

Intervention:

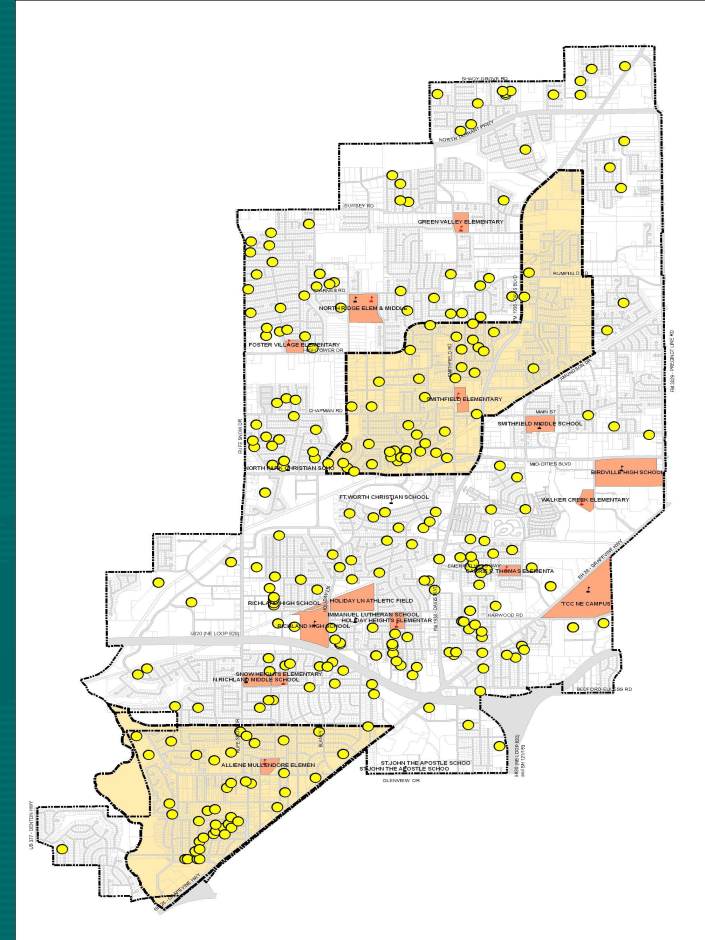
July 2006 –June 2007

Connecting families to Social Capital Infrastructure

- Family Resource Coordinators
- Broaden referral base from CPS to include community referrals
- GIS-driven natural community resource system
- Community Connections Plans
- Family Resiliency funds
- Interface with Prevention efforts

Building Connections – Building Community *Prevention*

- Goal: reduce the # of dots (CPS reports for July 2004-June 2005). Focus on density of dots
- Community Steering Committee composed of Faith Community, City, School District members
- Chose Co-Chairs: one from Faith Community; one from City
- Developed two community teams to “de-isolate” families in the target areas – two elementary school attendance zones
- Began planning & implementation



Building Connections – Building Community

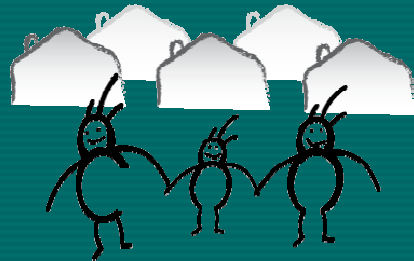
Prevention: July 2005-June 2006

- Single Parent Family Network
- Faith Communities adopting elementary schools; prayer walks
- Family Festivals, Movie Night for elementary school neighborhoods
- Strong Fathers-Strong Families
- Touchpoints
- Natural Community Resource database
- Children's Neighborhood Network in apartment communities

Building Connections – Building Community

Prevention: July 2006-June 2007

- Single Parent Family Network expands
- Faith Communities deepen relationship with elementary schools
- Family Festivals, Movie Nights continue
- Strong Fathers-Strong Families & Touchpoints develop sustainable groups at elementary schools
- Develop a Youth Group Network
- Expand Children's Neighborhood Network in apartment communities



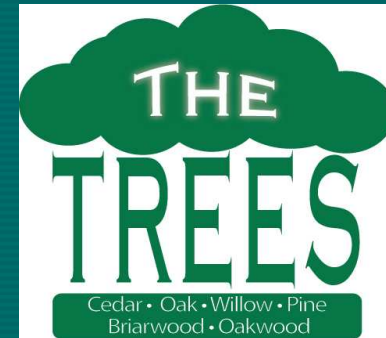
CHILDREN'S NEIGHBORHOOD NETWORK

Connecting Neighbors to Neighbors

CNN #1: Hurst

Faith Community Lead

- St. Philip Presbyterian Church members provide initial neighborhood support
- Began forming a CNN in March 2005 to serve about 275 homes
- 20+ members: neighbors, St. Philip members, and community members
- Facilitated three neighborhood block parties for families and children: 125-140 in attendance per event



CNN #1: Hurst *Faith Community Lead*

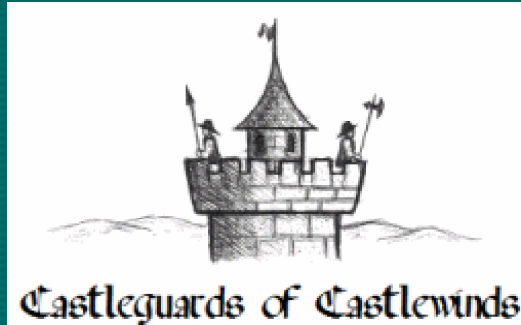


- Designed a newsletter they take to neighbors regularly
- Facilitated more than 25 neighborhood walks
- Offer a family film night for all neighbors
- Building a new playground for a low-income apartment community



CNN #2: North Richland Hills

Apartment Community Lead



- Castlewinds Apartments staff provide initial neighborhood support
- Began forming in May 2006 to serve 156 apartment units
- 15+ members: apartment community residents, Castlewinds staff, and community members
- Facilitated their first neighborhood block party on July 22, 2006



CNN #2: North Richland Hills *Apartment Community Lead*

- Facilitated 10+ apartment complex walks
- Planning to implement a Welcome Wagon for new neighbors
- *Ceased to exist: the value of trust*



CNN #3: North Richland Hills

Integrate CNN and BC2

- Equestrian Pointe Apartments:
 - 800 units
 - 1,000 police calls annually
- Urban Mission:
 - couple from Richland Hills Church of Christ
 - 12 month commitment
 - Participate in CNN development
- CNN:
 - 1/3rd of Apartment Community
 - Begins February 15



Building Connections – Building Community

Intervention: July 2006-June 2007

- Family Resource Coordinators
- Referrals from the Police Department, Elementary Schools, and CPS
- Online Resource Database
- Community Connections Plans
- Family Resiliency Fund
- Interface with Prevention efforts

Building Connections – Building Community

Intervention #: August-December 2006

- 252 total referrals
 - 126 police referrals
 - 31 school referrals
 - 95 CPS referrals
- 143 families contacted
- 109 families unable to contact/cases deemed inappropriate criteria to work
- 63 total families that began 30-day process
- 47 Community Connections Plans
- 11 families received family resiliency funds

Building Connections Results?

CPS Referrals: Zip Code

2001-2004:

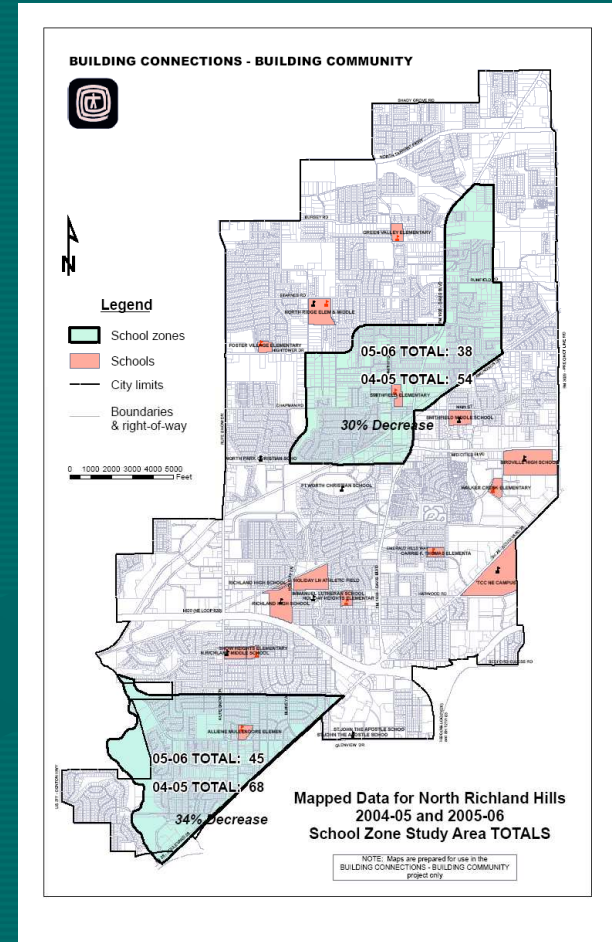
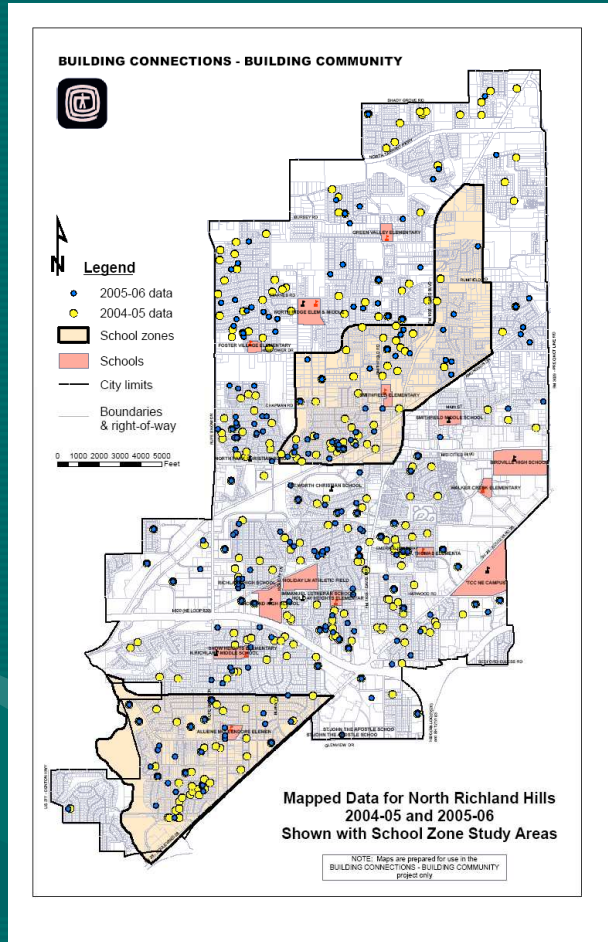
- 76111: 12.4% increase
- 76117: 4.6% increase
- 76118: 0.0% increase
- 76148: 22.6% increase
- 76180: 53.8% increase

2005:

- 76111: 50.3% increase
- 76117: 17.2% increase
- 76118: 15.2% increase
- 76148: 22.1% increase
- **76180: 8.7% decrease**

Building Connections Results?

CPS Referrals: July 2004-June 2005 vs. July 2005-June 2006



Building Connections – Building Community *Replication*

- Prevention component:
 - Arlington 76010
 - Begins February 1
 - \$25,000 per year
- Intervention component:
 - Police Dept. FRC integrated into PD budget
 - Results by September 2007
 - \$100,000-\$160,000 per year
- Project manual:
 - Completed by March 15, 2007
 - Online by March 31, 2007

Building Connections – Building Community

Contact Information:

- John Ross, Executive Director, TCYC
817-437-4383 or johnross@tcyc4kids.org
- Jeremy Freehill, BC2 Coordinator, TCYC
817-875-5884 or jeremyfreehill@tcyc4kids.org
- Linda Fulmer, BC2 Contract Manager
817-451-8740 or lindafulmer@sbcglobal.net
- TCYC: www.tcyc4kids.org