



CHILDREN'S NEIGHBORHOOD NETWORK

Connecting Neighbors to Neighbors



CNN History

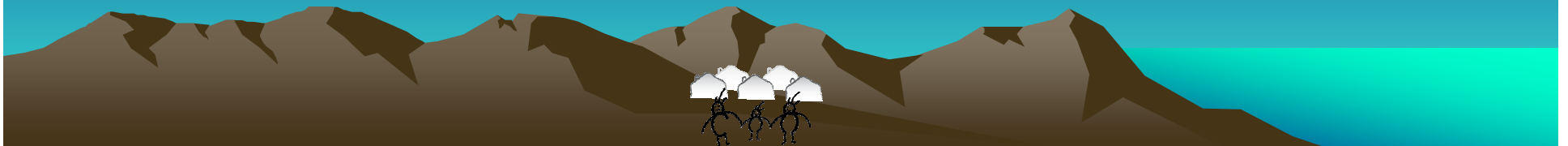


- 2003: Partnership For Children
 - Childhood well-being indicators
 - Disconnect between need and help
 - Neighborhood based alternative systems-of-care
 - 3 PFC models
- 2004: Basic Project Design
 - Replicable, sustainable
 - Neighborhood models
 - Sid Richardson Foundation
 - Pilots #1 & #2



2004 Lessons Learned

- Lead person is critically important
- Faith community stronger than agency
- Involve the elementary school
- Forego the survey
- Focus on a specific first project
- Neighborhood walks
- Create an identity
- Generate shared leadership



CNN Start-Up Steps

- Designate lead person – 1 year commitment!
- Define geographic boundaries
- 1st Organizing Team meeting
 - Representation
 - Plan & implement 1st neighborhood walk
- 1st Leadership Team meeting
- Leadership Team activities:
 - name, logo, newsletter, leadership
- 1st Neighborhood Family Party
- Party Recap & what's next



CNN #1: Hurst Faith Community Lead

- St. Philip Presbyterian Church members provide initial neighborhood support
- Began forming a CNN in March 2005 to serve about 275 homes
- 20+ members: neighbors, St. Philip members, and community members
- Facilitated three neighborhood block parties for families and children: 125-140 in attendance per event



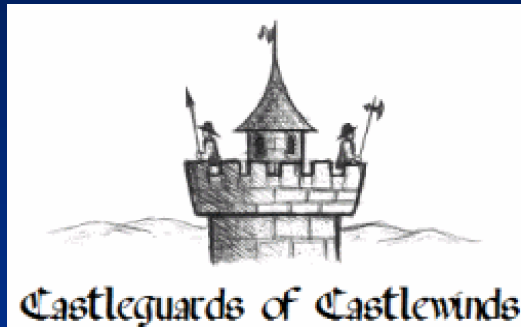
CNN #1: Hurst Faith Community Lead



- Designed a newsletter they take to neighbors regularly
- Facilitated more than 35 neighborhood walks
- Offer a family film night for all neighbors
- Exploring reaching out to Seniors
- *Trees Chairs:* Carolyn Arnold & Rick Patterson



CNN #2: North Richland Hills Apartment Community Lead



- Castlewinds Apartments staff provide initial neighborhood support
- Began forming in May 2006 to serve 156 apartment units
- 15+ members: apartment community residents, Castlewinds staff, and community members
- Facilitated their first neighborhood block party on July 22, 2006. Nearly 150 participants.



CNN #2: North Richland Hills Apartment Community Lead

- Facilitated 10+ apartment complex walks
- Planning to implement a Welcome Wagon for new neighbors
- *CastleGuards*: ceased to exist in Fall 2006
- Lesson learned: trust is important!



CNN #3 & #4

- CNN #3: began at Two Thousand Oaks Apartments in a North Richland Hills in August 2006 with the apartment management providing the initial neighborhood support. This CNN has:
 - 104 apartment units
 - 10+ members: apartment community residents, apartment staff, and community members
 - planned their first neighborhood block party for October 14, 2006
- CNN #4: began faith community led effort (St. Christopher Episcopal Church) in January 2007. Focus on 250 home neighborhood in southwest Fort Worth. Group has organized, had several neighborhood walks, is moving forward with plans for a Spring event.

CNN #5 & #6

- CNN #5: this apartment community effort at Eagle Crest Apartments in Arlington, began in February 2007.
 - Partners in this effort include Mission Arlington and UTA SUPA class
 - Currently there are more than 15 residents involved in planning their May 5 Neighborhood Party.
 - Interesting note: meetings are held in Spanish.
- CNN #6: began March 2007, this CNN focuses on Equestrian Pointe apartments in North Richland Hills.
 - complex has 800 units and is considered to be a prime candidate by the NRH Police Department for such a project.
 - Partners in this effort include the NRH PD, Richland Hills Church of Christ, UTA SUPA, and BC2, the North Richland Hills 76180 child abuse and neglect prevention project.
 - adds an Urban Missionary couple to help facilitate the success of this CNN.

What's next for the CNN?

- CNN Quarterly Meetings
- CNN Starter Teams
- UTA SUPA report
- Expansion possibilities:
 - Implement in new HOAs
 - Faith Community adopts model
 - UWNE uses for Seniors



The CNN is a project of:

